


Name	Type	Default Value	Description
Var1	DB Table	{Worksheet: "Hoja1"; workbook: "..\..\Numdocumentos.x	
Var2	DB Table	{Query: "declare @idsol integer declare @idpol integer de	
Solicitud	DB Table	{Query: "select top 1 idsolicitud from epsolpago where idt	
Var_EP_DEBECOMP	DB Table	{Query: "declare @idsol integer declare @idpol integer se	Obtiene el valor del debe de la poliza del comprometido de
Var_EP_HABERCOMP	DB Table	{Query: "declare @idsol integer declare @idpol integer se	Obtiene el valor del haber de la poliza del comprometido d
Var_EP_MONTO	DB Table	{Query: "declare @idsol integer declare @idpol integer de	Compara el valor del monto de la solicitud con el monto de
Var_EP_MONTODEV	DB Table	{Query: "declare @idsol integer declare @idpol integer de	Compara el debe y haber de la poliza del devengado
Var_EP_MONTOEJ	DB Table	{Query: "declare @idsol integer declare @idpol integer de	Compara el debe y haber de la poliza del ejercido
Var_EP_EVEP_CUENTA	DB Table	{Query: "declare @idsol integer declare @idpol integer de	Cmpara que el evento especifico sea el mismo que el afec
Var_EP_EVEP_CUENTADEV	DB Table	{Query: "declare @idsol integer declare @idpol integer de	Compara que el evento especifico sea el mismo que el afe

Edit DB Table Variable Value ✕

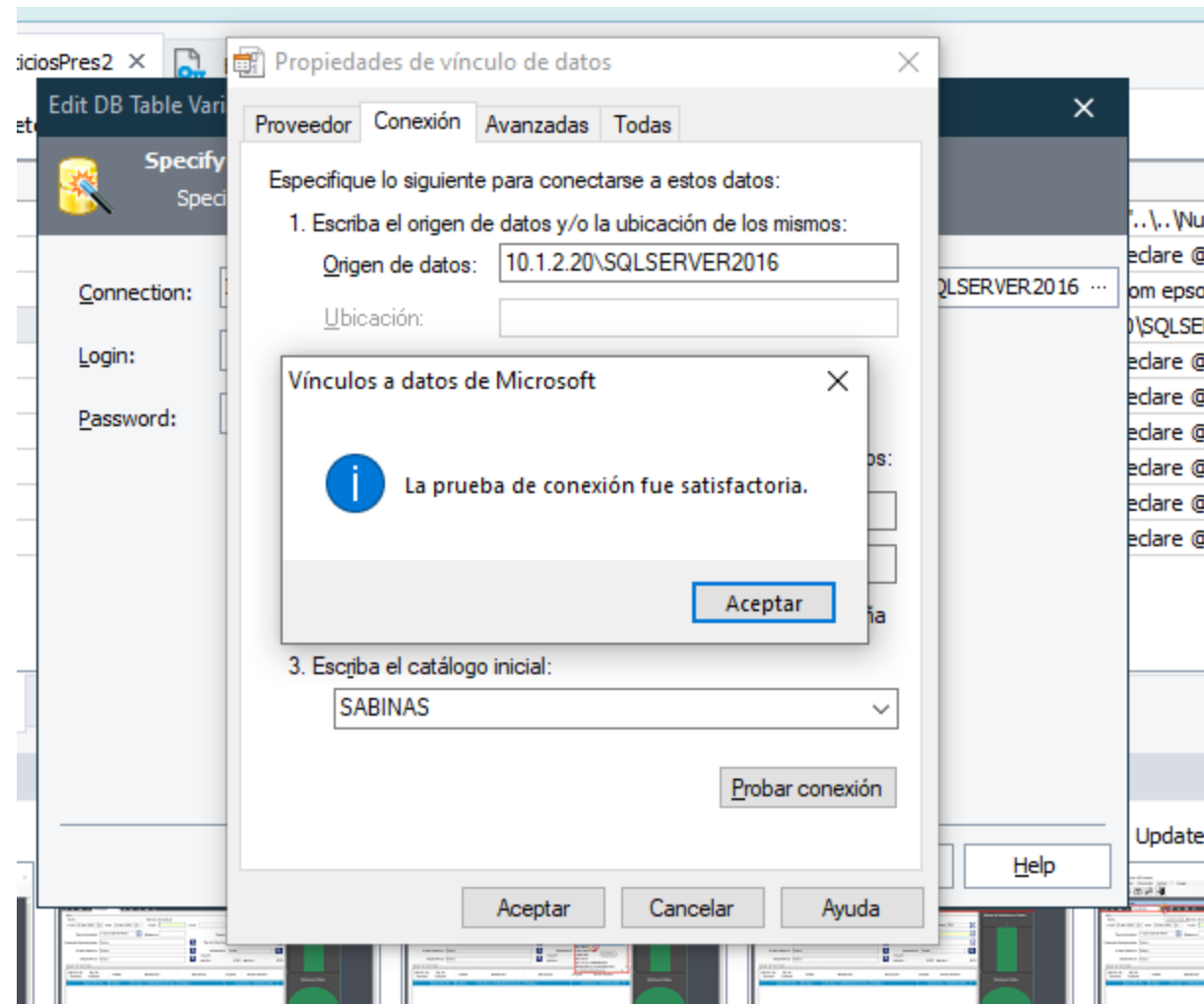
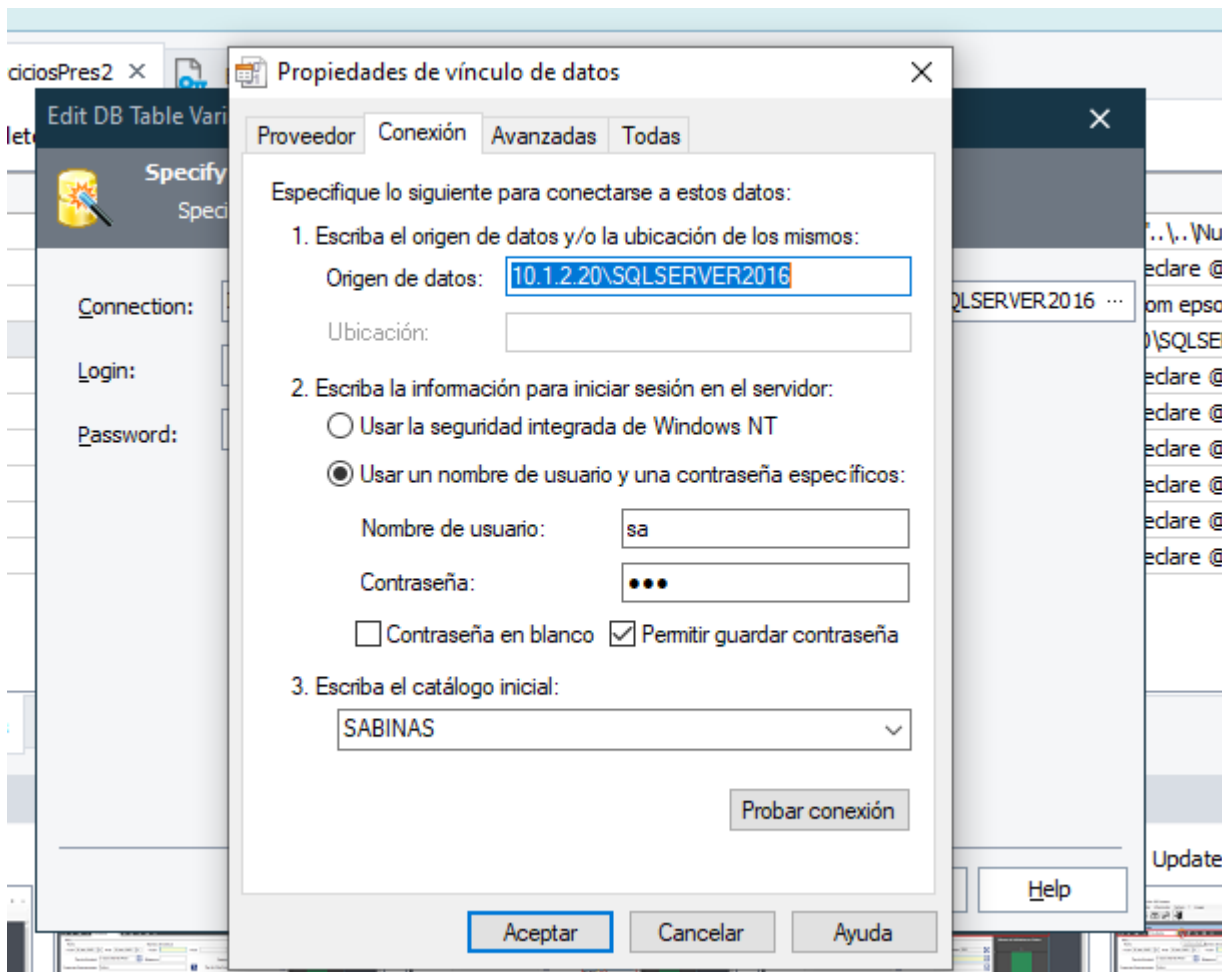
 **Specify the data source type**
Choose the data source which the DB Table variable will use.

Excel worksheet
Select this item if the DB Table variable will provide access to an Excel sheet.

CSV file
Select this item if the DB Table variable will provide access to a CSV file.

Database table
Select this item if the DB Table variable will provide access to the data of a database table or view.

Database query
Select this item if the DB Table variable will provide access to the results of a query to a database.



Edit DB Table Variable Value

Specify Query
Specify an SQL query that returns a recordset with data that the variable will use.

Query text:

```
declare @idsol integer
declare @idpol integer
select top 1 @idsol=idsolicitud from epsolpago where idtiposolpago=1 order by
idsolicitud desc
select @idpol=idpoliza from AbsMomConPresupuestal where idsolicitud=@idsol and
idMomConPresupuestal=4
select sum(debe) as debecomp from contapolizadet where idpoliza=@idpol
```

Design Query...
View Results...

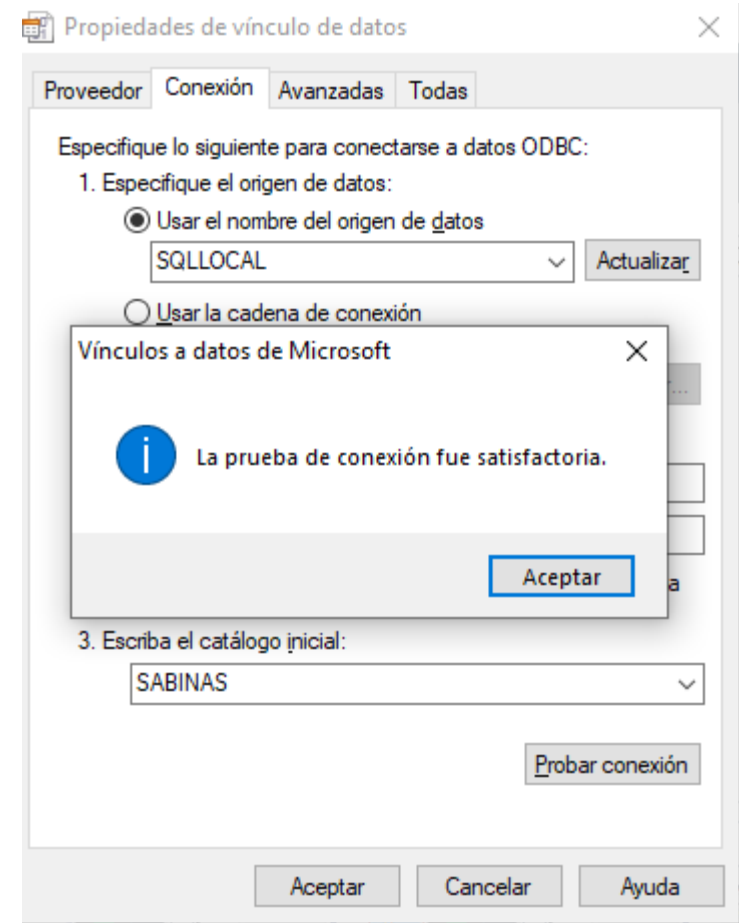
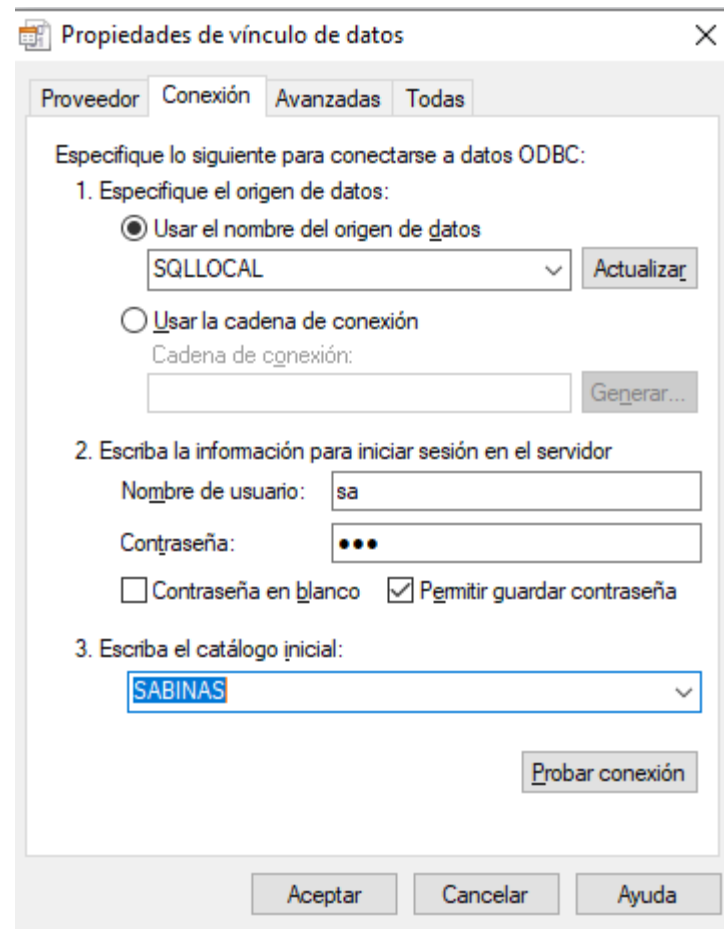
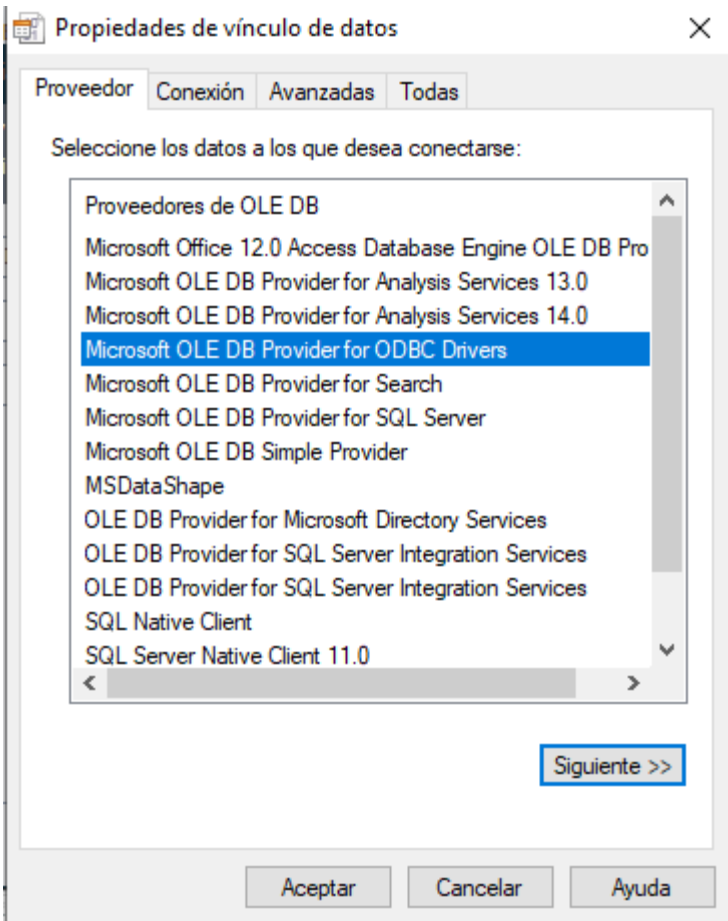
< Back Finish Cancel Help

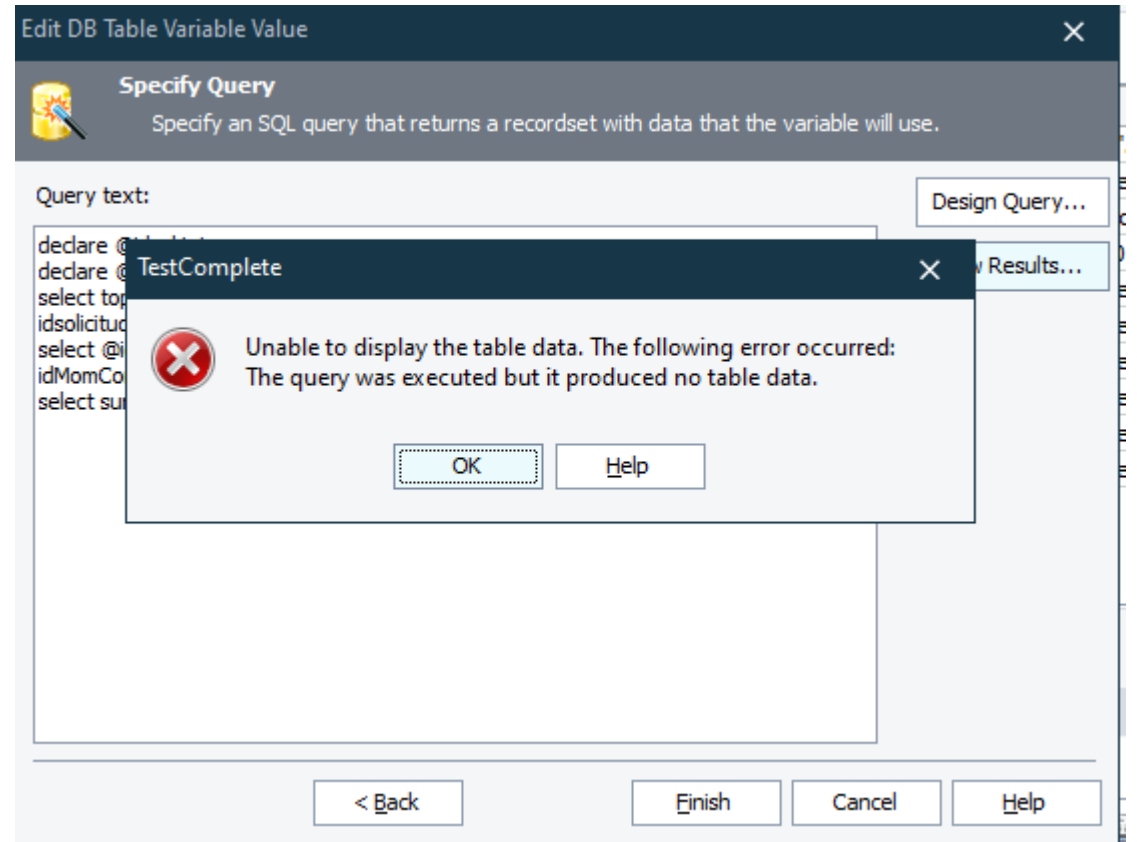
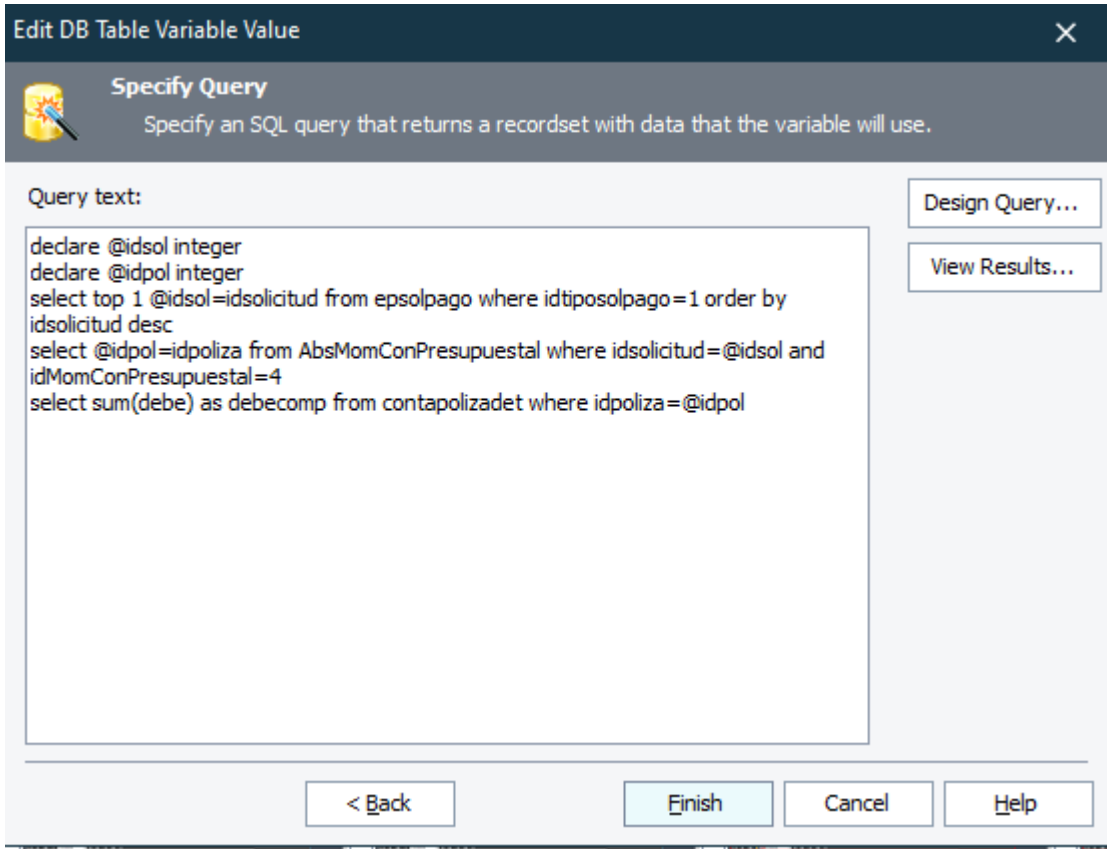
View Table

debecomp
10

Column count: 1 Record count: 1

Close Help





I am currently using SQL SERVER as the database.
In each of my tests I need to make several queries and save them in variables to later compare them and evaluate if I send an error.

However, since I have to be testing in different databases, changing the name of the database in each of the variables is inefficient, that's why I created an ODBC connection but when using it in the variables, it gives me an error when executing the query For this reason it does not allow me to use the ODBC connection, can you help me?

How can I configure a single connection and that all my queries use that connection, in such a way that when I modify the database to execute the tests, I only change it in one place.

so i have two situations

- 1.- I need a single connection so that all the variables point to the same connection or only make the change in one
- 2.- That the ODBC query can work, if that is the case to resolve situation one